

DODGE COUNTY HISTORICAL SOCIETY

Preserving Local History Since 1938!

MEMBERSHIP FORM

New Member

Renewal Member

Name _____

Street Address _____

City _____ State _____ Zip _____

Telephone _____ Fax _____

E-mail _____

Membership Levels:

Student \$1

Household \$20

Affiliate \$50-\$100

Patron \$100-\$249

Sustaining \$250-\$499

Heritage \$500+

I would like to volunteer at the museum and/or special events. Please contact me.

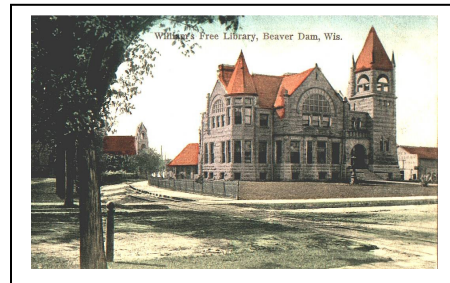
Please return form with contribution to:

Dodge County Historical Society

Attn: Membership Chairperson

105 Park Ave

Beaver Dam WI 53916



*Any contribution to the Dodge County Historical Society over and above the basic Household dues of \$20.00 may be tax deductible as a charitable contribution. Dues paid by any business or organization may be deducted as a business expense. Please consult your accountant.